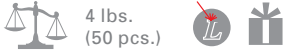


1123 Irma Keyholder - Chrome Finish

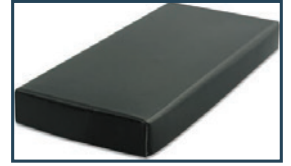
These custom imprinted metal key chains and key holders are elegant and a classic way to make your brand stand out. Chrome Finish.

Dimensions: 1 3/16" x 2 3/8" **Imprint:** 3/8" x 3/8"



	100	250+	
Laser	3,25	2,95	(C)
2nd Side Laser	1,00	0,80	(C)

While Quantities Last. Inventory Subject To Prior Sale.



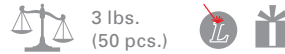
Gift Box Included with all metal keyholders



1125 Solaris Keyholder - Chrome Finish

Features the spring loaded Pull-N-Twist key mechanism.

Dimensions: 1 1/2" x 2" **Imprint:** 1/2" x 1/2"



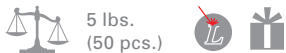
	100	250	500	1000+	
Laser	3,29	2,99	2,79	2,59	(C)
2nd Side Laser	1,00	0,80	0,75	0,70	(C)



1139 Era Keyholder - Chrome Finish

These custom imprinted metal key chains and key holders are elegant and a classic way to make your brand stand out. Chrome Finish.

Dimensions: 3 7/16" x 7/8" **Imprint:** 1/2" x 1 1/4"



	100	250	500	1000+	
Laser	3,29	2,99	2,79	2,59	(C)
2nd Side Laser	1,00	0,80	0,75	0,70	(C)



Set-up: \$60.00 (G).

Pre-production sample: Available upon request **Free virtual proof** with supplied file.

Less than minimum charge: \$60 (G). **Repeat set-up charge:** \$45 (G). **Production time** 8 to 10 working days after proof approval.

Prices subject to change without notice. Please check www.islinecanada.com for current pricing